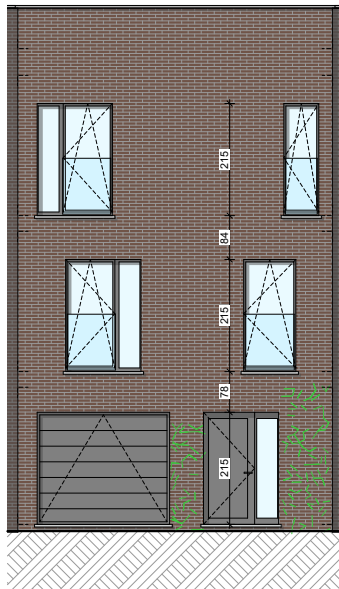


WAREMME - QUARTIER DES HIRONDELLES

**LOT  
12**

**Maison 2 façades**

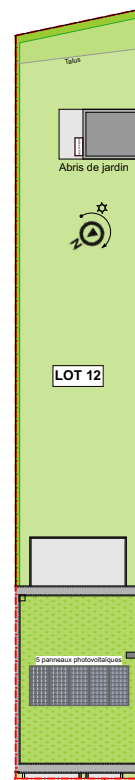
3 chambres - superficie : ± 178 m<sup>2</sup> - Terrain : ± 242 m<sup>2</sup>  
Garage



Façade avant



Façade arrière



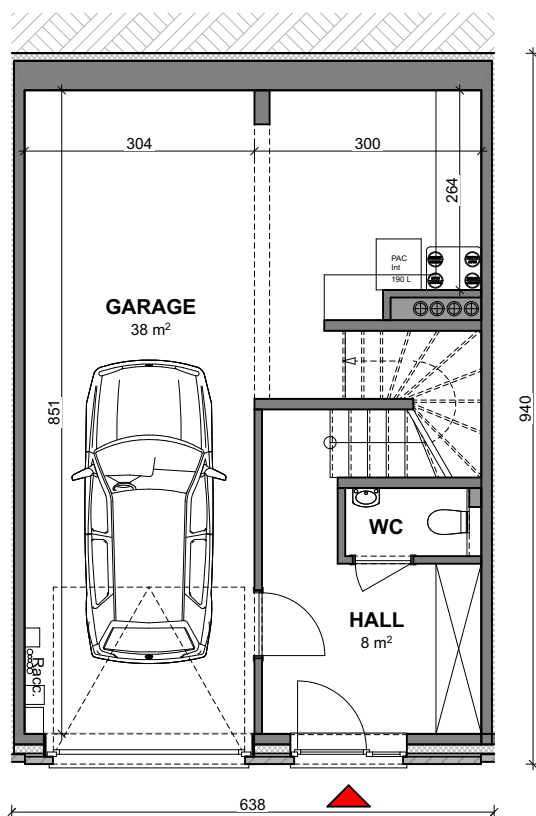
Parcelle

Façades

Contactez Julien Gratia  
T +32 4 268 01 44  
matexi.be - julien.gratia@matexi.be



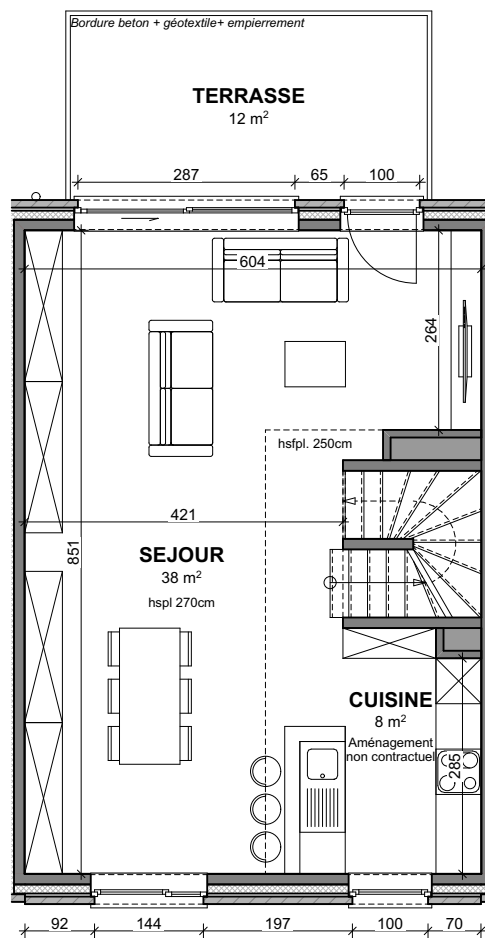
# LOT 12



## Vue en plan - Sous-sol (garage)

Surface nette approximative : 51m<sup>2</sup>

# LOT 12



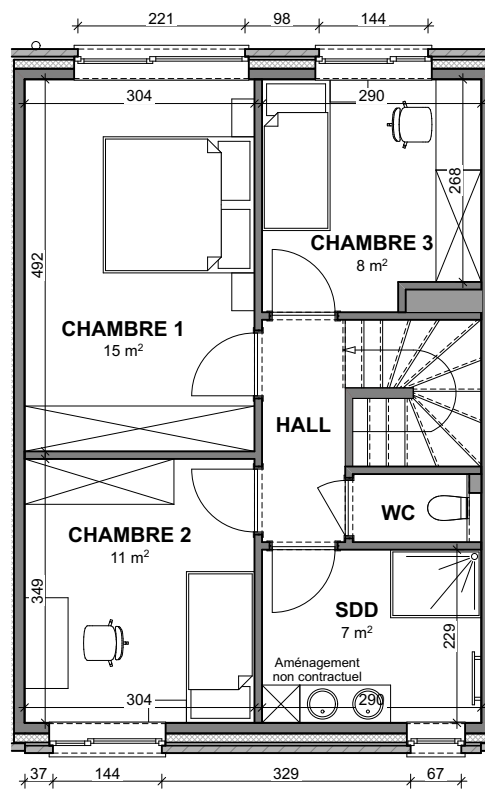
## Vue en plan - Rez (jardin)

Surface nette approximative : 51m<sup>2</sup>

Contactez Julien Gratia  
T +32 4 268 01 44  
matexi.be - julien.gratia@matexi.be



# LOT 12



## Vue en plan - Etage

Surface nette approximative : 51m<sup>2</sup>