

CHASTRE - RUE DES DOUVES

LOT

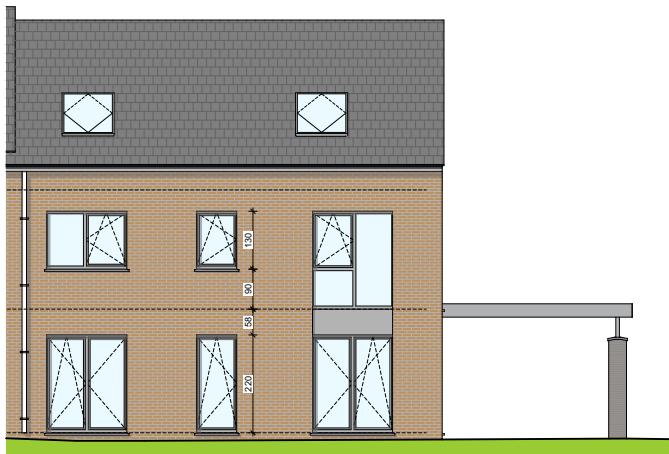
Maison 3 façades

Q

3 chambres - superficie : ± 150 m² - Terrain : ± 818 m²



Façade avant

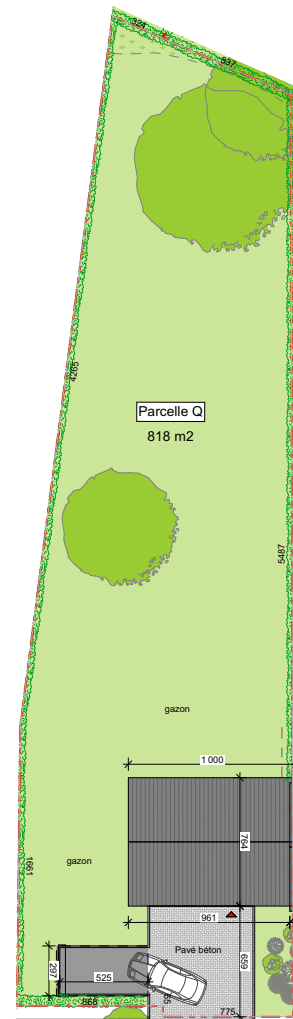


Façade arrière



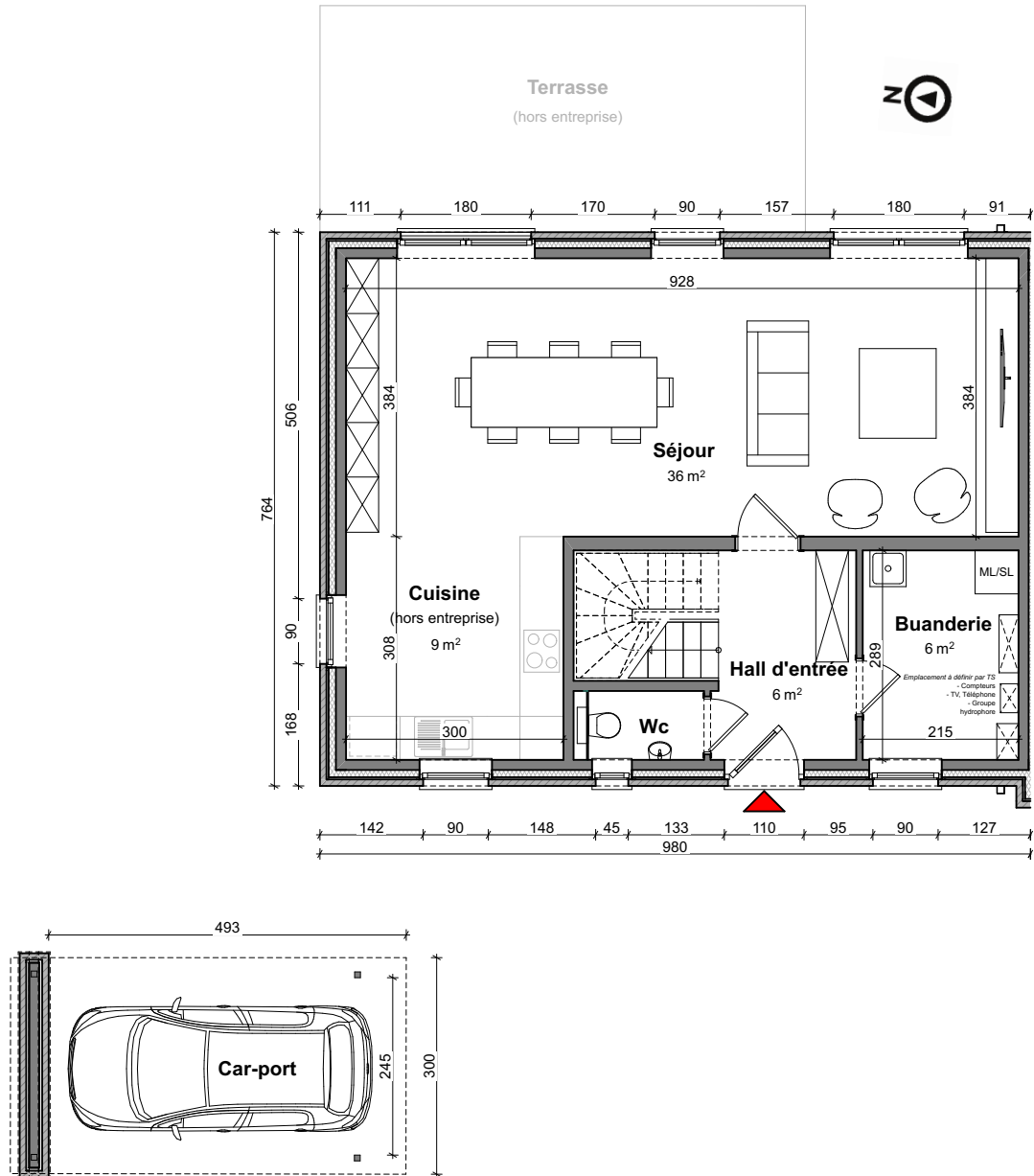
Façade latérale gauche

Façades



Parcelle

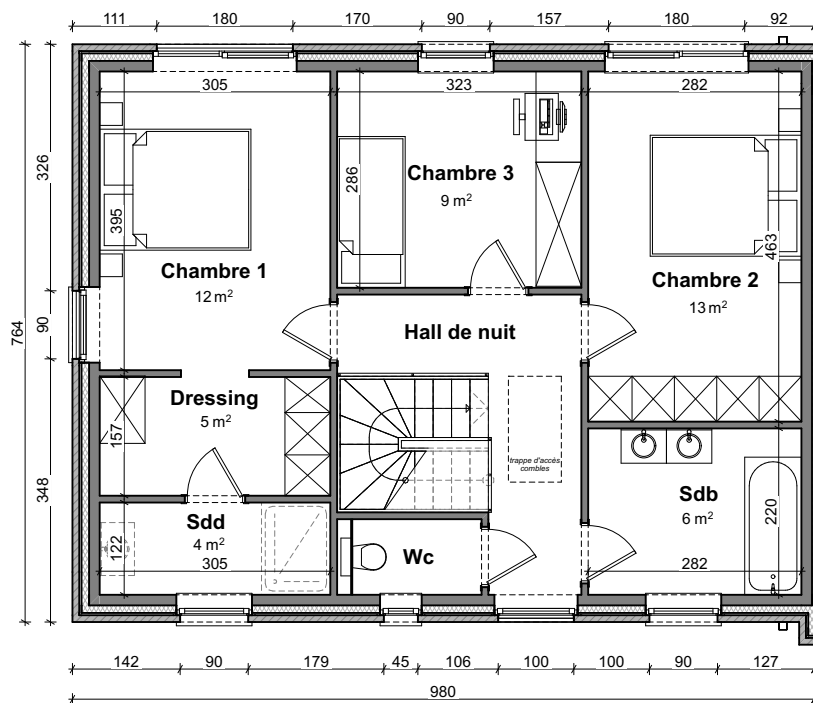
LOT Q



Vue en plan - Rez

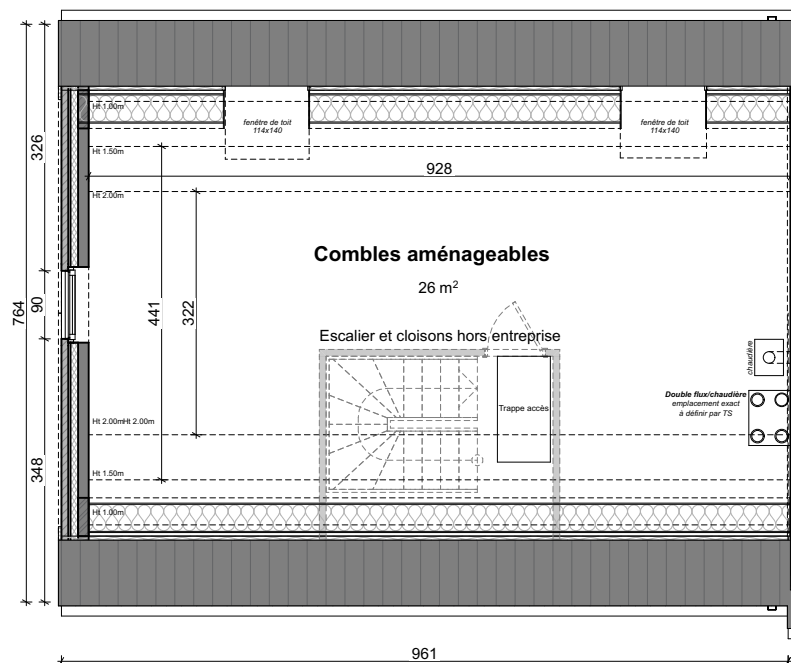
Surface nette approximative : 64m²

LOT
Q



Vue en plan - Etage
Surface nette approximative : 64m²

LOT
Q



Vue en plan - Grenier